

## **RESOLUTION 223-16**

### **A RESOLUTION OF THE BOROUGH OF CLAYTON ADOPTING THE MITIGATION PLAN FOR FOUR NEW JERSEY COUNTIES DATED DECEMBER 29, 2016**

WHEREAS, the Mayor and Borough Council recognizes the threat that natural hazards pose to people and property within the Borough of Clayton; and

WHEREAS, the Borough of Clayton has participated in the preparation of the Mitigation Plan for Four New Jersey Counties, a multi-jurisdictional, multi-hazard mitigation plan in accordance with the Disaster Mitigation Act of 2000; and

WHEREAS, the Mitigation Plan for Four New Jersey Counties includes an Appendix that identifies mitigation goals, strategies, and measures specifically for the Borough of Clayton to reduce or eliminate long-term risk to people and property from the impacts of future hazard events and disasters; and

WHEREAS, adoption by the Mayor and Borough Council demonstrates commitment to hazard mitigation and achieving the goals outlined in the Mitigation Plan for Four New Jersey Counties.

NOW, THEREFORE, BE IT RESOLVED by the Mayor and Borough Council of the Borough of Clayton, County of Gloucester, New Jersey that:

The Borough Council adopts the Mitigation Plan for Four New Jersey Counties and the Borough of Clayton Appendix including authorizing the formation and duties of the Borough of Clayton Hazard Mitigation Working Group as follows:

1. The Working Group shall be convened by the Borough of Clayton Emergency Management Coordinator and will include representatives of the following departments, agencies and organizations and other interested parties:

- a. Emergency Management Coordinator/Fire Department  
Mayor/Economic Development Committee Member  
Council Member – Public Safety Director/Planning Board Member  
Borough Administrator  
Public Works Director  
Chief of Police

2. The Working Group shall convene to conduct plan implementation and maintenance activities as identified in the Borough of Clayton Appendix including monitoring, evaluation, and updating the Borough of Clayton Appendix and providing annual reports to the Mayor and Borough Council and the County Office of Emergency Management.

ADOPTED at a regular meeting of the Mayor and Council of the Borough of Clayton held on December 29, 2016.

BOROUGH OF CLAYTON



---

TOM BIANCO, Mayor

ATTEST:



---

CHRISTINE NEWCOMB, Clerk



Mitigation Plan for Four New Jersey Counties  
**Gloucester County Appendices**

**Appendix GC.2**  
**Clayton Borough, New Jersey**

April 8, 2016

## Table of Contents

---

<b>Table of Contents</b>	<b>GC.2-i</b>
<b>Part 1 Overview</b>	<b>GC.2-1</b>
1.1: Mitigation Plan for Four New Jersey Counties	GC.2-1
1.2: Clayton Borough (Gloucester County) Municipal Appendix	GC.2-1
<b>Part 2 Participation</b>	<b>GC.2-2</b>
2.1: Municipal Working Group Participation	GC.2-2
2.2: Public Participation	GC.2-4
<b>Part 3 Hazard Identification and Risk Assessment</b>	<b>GC.2-5</b>
3.1: Municipal Profile	GC.2-5
3.2: Hazard Priorities	GC.2-9
3.3: Hazard Mapping	GC.2-10
3.4: Critical Facilities Inventory and Hazard Exposure Assessment	GC.2-11
<b>Part 4 Mitigation Measures</b>	<b>GC.2-16</b>
4.1: Mitigation Goals and Strategy	GC.2-16
4.2: SDVR HMP Mitigation Measures	GC.2-17
4.3: Municipal Mitigation Measures – Identification	GC.2-18
4.4: Municipal Mitigation Measures – Implementation	GC.2-20
4.5: Multi-Jurisdictional Mitigation Measures	GC.2-22
4.6: Authorities, Policies, Programs, Resources, and Plan Integration	GC.2-24

---

## Table of Contents

---

### List of Figures

Figure GC.2-1: Clayton Borough (Gloucester County) Location Map	GC.2-5
Figure GC.2-2: Clayton Borough Base Map	GC.2-6
Figure GC.2-3: Clayton Borough Housing Units by Year Built	GC.2-8
Figure GC.2-4: Clayton Borough Mitigation Project Locations	GC.2-23

### List of Tables

Table GC.2-1: Clayton Borough (Gloucester County) Working Group	GC.2-2
Table GC.2-2: Public Participation	GC.2-4
Table GC.2-3: Clayton Borough Demographics	GC.2-7
Table GC.2-4: Clayton Borough Demographic Rankings	GC.2-7
Table GC.2-5: Clayton Borough Economics and Housing	GC.2-7
Table GC.2-6: Clayton Borough Ranking (Economics and Housing)	GC.2-8
Table GC.2-7: Supporting Mapping and Exhibits	GC.2-10
Table GC.2-8: Clayton Borough Critical Facilities Inventory	GC.2-12
Table GC.2-9: Clayton Borough Critical Facilities Hazard Exposure	GC.2-14
Table GC.2-10: Status of Clayton Borough SDVR HMP Mitigation Measures	GC.2-17
Table GC.2-11: Clayton Borough Municipal Mitigation Measures Identification	GC.2-19
Table GC.2-12: Clayton Borough Municipal Mitigation Measures Implementation	GC.2-20
Table GC.2-13: Clayton Borough Multi-Jurisdictional Mitigation Measures	GC.2-22

### Attachments

Attachment GC.2.A: Public Review Comments	GC.2.A-1
Attachment GC.2.B: Adoption Resolution	GC.2.B-1
Attachment GC.2.C: Approval Letter	GC.2.C-1

---

## **Part 1: Overview**

---

### **Part 1.1: Mitigation Plan for Four New Jersey Counties**

The Mitigation Plan for Four New Jersey Counties (NJ4 HMP) incorporates input from approximately ninety (90) participating municipalities in Camden, Cumberland, Gloucester, and Salem Counties. The NJ4 HMP is an update and expansion of the South Delaware Valley Region Multi-jurisdictional Hazard Mitigation Plans that were adopted by all four counties and approved by the Federal Emergency Management Agency in 2010 and 2011.

The NJ4 HMP has two main parts:

- Regional Hazard Mitigation Plan
- County and Municipal Appendices

The Regional Hazard Mitigation Plan includes descriptions and information that is common to all participating NJ4 HMP jurisdictions organized according to the following three main focus areas:

- Planning Process
- Hazard Identification and Risk Assessment
- Mitigation Measures

The Regional Hazard Mitigation Plan also includes Annexes that contain detailed background information for these three focus areas and additional reference materials for the implementation of the NJ4 HMP.

The County and Municipal Appendices include specific information for these same three main focus areas for each of the participating municipalities. Detailed tabulations are included in these Appendices for critical facilities, status of past mitigation activities, and proposed mitigation measures for each municipality.

### **Part 1.2: Clayton Borough (Gloucester County) Municipal Appendix**

This Municipal Appendix is focused on Clayton Borough in Gloucester County, New Jersey.

The Clayton Borough Municipal Working Group recommended the Clayton Borough (Gloucester County) Municipal Appendix for adoption to the Clayton Borough Committee.

The Clayton Borough Committee adopted the Municipal Appendix by resolution (see Attachment B: Adoption Resolution).

Region II of the Federal Emergency Management Agency subsequently approved the Municipal Appendix (see Attachment C: Approval Letter).

## Part 2: Participation

### Part 2.1: Municipal Working Group Participation

Part 2.1 includes:

- *Municipal Working Group members including positions in the community, meetings and work sessions attended, and specific contributions to the Municipal Appendix*
- *Municipal positions and organizations that were invited but were not able to participate in the plan update process*
- *Municipal positions and organizations that have been recommended by the Federal Emergency Management Agency (FEMA) as candidates for participation on Municipal Working Groups but do not exist in the municipality*

Table GC.2-1 identifies the Municipal Working Group members. As explained in *Section 2: Planning Process* of the Mitigation Plan for Four New Jersey Counties (NJ4 HMP) Regional Hazard Mitigation Plan, the Municipal Working Groups are comprised of community representatives who worked to make sure mitigation measures included in the Municipal Appendix addressed the risks faced by residents, businesses, and property owners and reflected the priorities of the community. The Working Group will also continue to stay involved during the implementation and maintenance of the NJ4 HMP.

**Table GC.2-1: Clayton Borough (Gloucester County) Working Group**

First Name	Last Name	Department	Position	Round 1 Work Session <sup>1</sup>	Working Group Meeting <sup>2</sup>	Round 2 Work Session <sup>3</sup>	Working Group Meeting <sup>4</sup>	Contribution <sup>5</sup>
Samuel	Teague Jr.	Clayton Borough OEM / Clayton Borough Fire Department	OEM Coordinator / Volunteer Fire Fighter / Floodplain Administrator	<input checked="" type="checkbox"/>	<input checked="" type="checkbox"/>	<input checked="" type="checkbox"/>	<input checked="" type="checkbox"/>	Organized Working Group and Work Sessions.
Tom	Bianco	Clayton Borough Council	Mayor / Economic Development Committee Member	<input checked="" type="checkbox"/>	<input checked="" type="checkbox"/>	<input checked="" type="checkbox"/>		
Darlene	Vondran	Clayton Borough Council / Public Safety / Clayton Borough Planning Board	Councilperson / Public Safety Director / Plan Use Board Member		<input checked="" type="checkbox"/>	<input checked="" type="checkbox"/>	<input checked="" type="checkbox"/>	Provided information on Borough Plans.
Sue	Miller	Clayton Borough Administration	Borough Administrator		<input checked="" type="checkbox"/>	<input checked="" type="checkbox"/>	<input checked="" type="checkbox"/>	Organized review of Preliminary Draft Appendix.
Edward	Bell	Clayton Borough Administration	Assistant Borough Administrator	<input checked="" type="checkbox"/>	<input checked="" type="checkbox"/>			

<sup>1</sup> Round 1 Work Session was held on August 11, 2014.

<sup>2</sup> Municipal Working Group Work Session was held on October 8, 2014.

<sup>3</sup> Round 2 Work Session was held on October 29, 2014.

<sup>4</sup> Municipal Working Group Work Session was held on December 11, 2014.

<sup>5</sup> Municipal Working Group members reviewed briefing materials in advance of Work Sessions, contributed during Work Sessions, and reviewed the preliminary Mitigation Plan for Four New Jersey Counties. Additional or unusual contributions are noted in the far right hand column of Table GC.2-1.

## Part 2: Participation

First Name	Last Name	Department	Position	Round 1 Work Session <sup>1</sup>	Working Group Meeting <sup>2</sup>	Round 2 Work Session <sup>3</sup>	Working Group Meeting <sup>4</sup>	Contribution <sup>5</sup>
Paul	Pheasant	Clayton Borough Public Works	Director				<input checked="" type="checkbox"/>	
Dennis	Marchei	Clayton Borough Police Department	Chief of Police		<input checked="" type="checkbox"/>			

The following lists candidate positions and organizations within the community that were extended invitations but could not participate during the development of the Municipal Appendix. These positions and organizations will continue to be extended invitations to participate during subsequent plan implementation and maintenance activities.<sup>6</sup>

- Building Code Official
- Engineering
- Community / Faith-Based Organizations
- Non-Governmental Organizations
- Major Employers and Businesses
- Healthcare Institutions
- School Board

The following lists positions and organizations that are generally recommended for consideration as members of the Municipal Working Groups by FEMA but do not currently exist within the community. An invitation to participate will be extended if positions are created or filled and as organizations are formed.

- GIS / IT Specialist
- Transportation Department Directors / Supervisors
- Emergency Medical Services
- Business Associations
- Environmental Organizations
- Non-Governmental Organizations
- Critical Infrastructure and Key Resources

<sup>6</sup> See Section 4: Mitigation Measures of the NJ4 HMP Regional Hazard Mitigation Plan.



## Part 2: Participation

### Part 2.2: Public Participation

*Part 2.2 includes opportunities provided to the public and interested parties in the municipality to participate during the plan update process.*

Table GC.2-2 Identifies the date, type, and location (where applicable) for opportunities provided to the public and interested parties to participate in the development of the plan update.

**Table GC.2-2: Public Participation**

Date	Type of Involvement	Location
November 17, 2014	Link to Project Website ( <a href="http://nj4hmp.com">http://nj4hmp.com</a> ) established	Borough of Clayton <sup>7</sup>
December 4, 2014	Flyers posted	Clayton Borough Hall and Community Board at Fulton Bank
December 4, 2014	Preliminary Municipal Appendix posted to website for public comment	Borough of Clayton <sup>7</sup>
December 5, 2014	Citizen Survey posted	Borough of Clayton <sup>7</sup>
December 11, 2014	Public hearing included on Clayton Borough Council agenda providing for open discussion, and public comment regarding the Preliminary Municipal Appendix	125 North Delsea Drive, Clayton

Public comments and input received for the Preliminary Municipal Appendix were considered by the Municipal Working Group and incorporated into the Draft Municipal Appendix where appropriate. Public comments received during the review of the Preliminary Municipal Appendix were included in Attachment A to the Municipal Appendix along with a brief explanation of how the comments were addressed in the Draft Municipal Appendix.

In addition, the Municipal Appendix was adopted as part of a regularly scheduled public meeting (See Attachment B: Adoption Resolution).

Public education and outreach is an on-going mitigation measure included in the Municipal Appendix.<sup>8</sup> In addition, public participation will continue to be encouraged during subsequent plan implementation and maintenance activities.<sup>9</sup>

<sup>7</sup> [www.claytonnj.com](http://www.claytonnj.com)

<sup>8</sup> See Mitigation Measure M-1 in Part 4 of the Municipal Appendix.

<sup>9</sup> See Section 4: Mitigation Measures of the NJ4 HMP Regional Hazard Mitigation Plan.

## Part 3: Hazard Identification and Risk Assessment

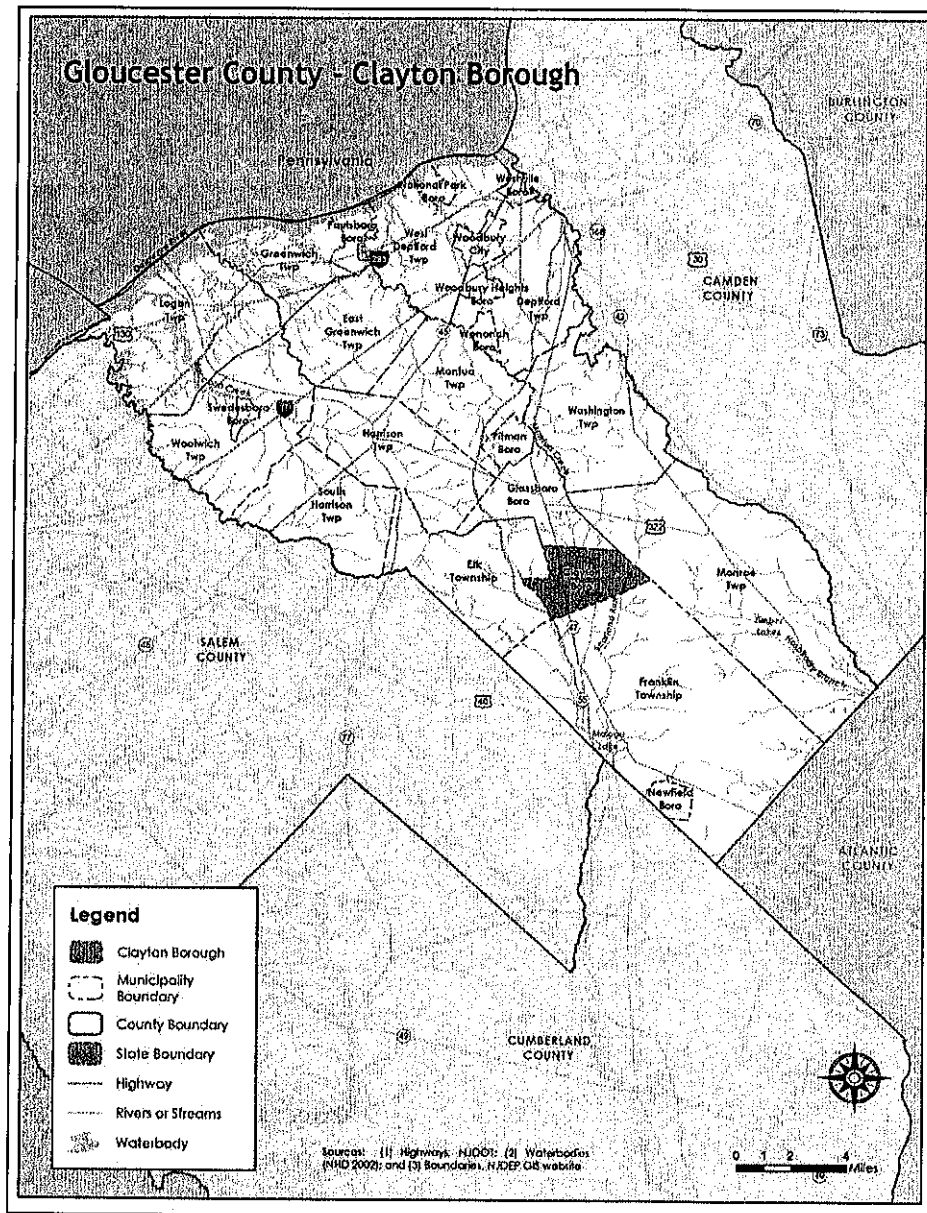
### Part 3.1: Municipal Profile

Part 3.1 includes:

- Selected data and information about the municipality that is generally relevant for emergency management planning and specifically for hazard mitigation
- A brief character sketch for the municipality that is only intended to portray a few of the most basic elements

Clayton Borough is located in the central part of Gloucester County (See Figure GC.2-1).

Figure GC.2-1: Clayton Borough (Gloucester County) Location Map

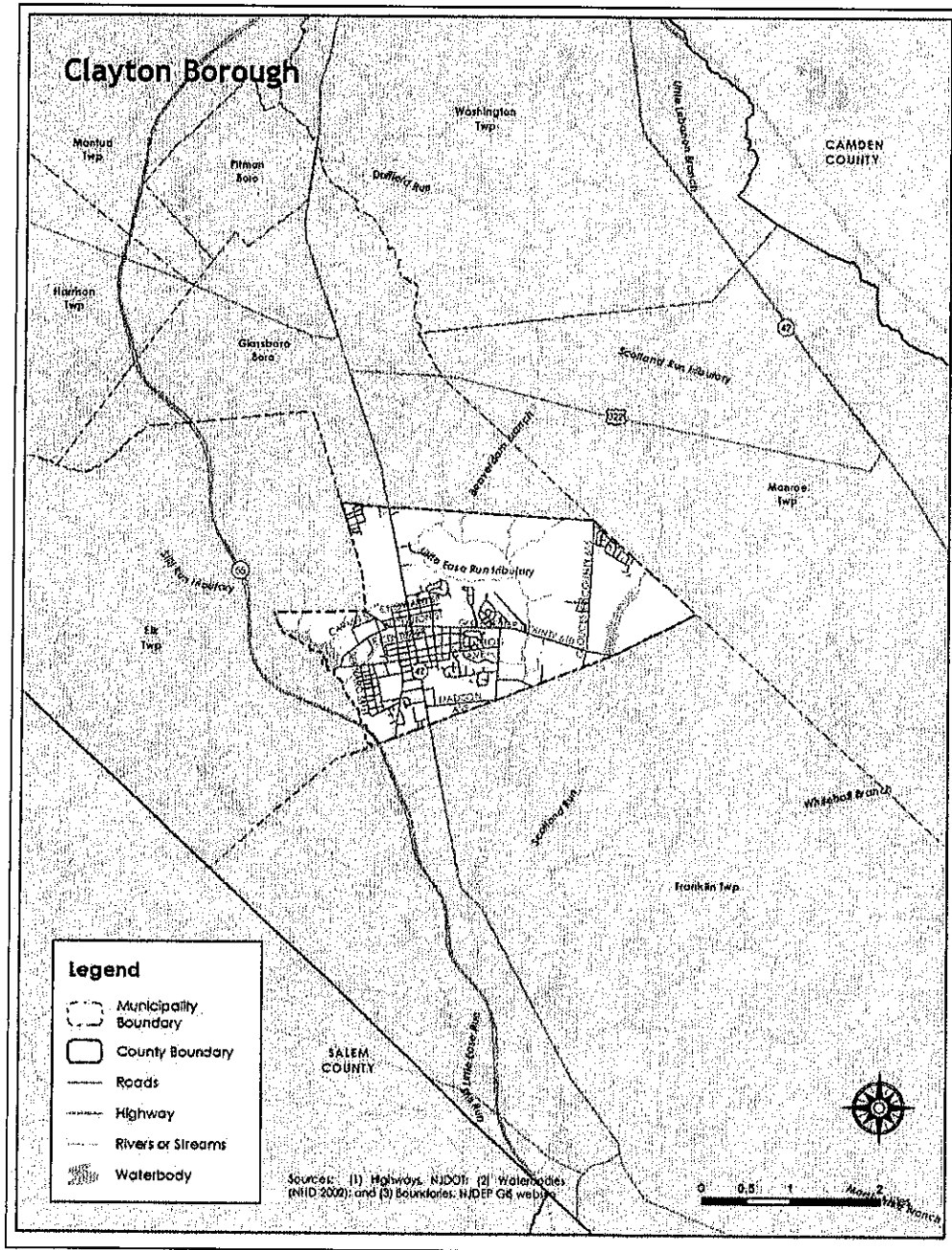


### Part 3: Hazard Identification and Risk Assessment

Clayton Borough is a growing community with a history dating back to shortly before the Revolutionary War. With a population of close to 8,000 people, Clayton Borough continues to develop commercial and retail areas.

Per Figure GC.2-2, the major watercourses include Little Ease Run tributary, Silver Lake, and Beaverdam Branch. Major transportation routes include State Highways 47 and 55, Academy Street, and Clayton Avenue. The land is gently rolling.

Figure GC.2-2: Clayton Borough Base Map



### Part 3: Hazard Identification and Risk Assessment

In addition, Table GC.2-3 is a compilation of demographic information for the municipality and comparison with the county, the four county region, and State of New Jersey.

**Table GC.2-3: Clayton Borough Demographics**  
(Source: Census DP-1, 2010 ACS 5-Year Estimates, DP 3, 4)

	Clayton Borough	Gloucester County	Region	New Jersey
2000 Population	7,139	254,673	974,328	8,414,350
2010 Population	8,179	288,288	1,024,926	8,791,894
Percent Change	14.57%	13.2%	5.19%	4.49%
Population Density	1,145.5 / sq. mile	895.3 / sq. mile	754.25 / sq. mile	1,195.5 / sq. mile
Land Area	7.14 sq. miles	322.00 sq. miles	1,358.86 sq. miles	7,354.22 sq. miles
% of Population 18 and younger	26.3	24.4	24.1	23.5
% of Population 18-64	63.5	63.2	62.7	63
% of Population 65 and over	10.2	12.4	13.2	13.5

Table GC.2-4 illustrates how Clayton Borough ranks in the county, the four county region, and New Jersey.

**Table GC.2-4: Clayton Borough Demographic Rankings**

	Gloucester County (total of 24)	Region (total of 90)	New Jersey (total of 565)
Population Rank	13	34	281
Land Area Rank	15	45	229
Population Density Rank	13	49	362
Population Change Rank	8	14	-

Table GC.2-5 includes information related to economic and housing statistics for Clayton Borough, Gloucester County, the four county region, and New Jersey.

**Table GC.2-5: Clayton Borough Economics and Housing**  
(Source: USDA ERS, Census DP-1, 2010 ACS 5-Year Estimates, DP 3, 4; NJ LWD 2010)

	Clayton Borough	Gloucester County	Region	New Jersey
Date Incorporated	May 9, 1887	1686	-	-
Rural / Urban Status	Urban	Urban	Urban	Urban
Median Household Income	\$70,299	\$72,664	\$60,933	\$69,811
Total Number of Housing Units	3,128	109,796	397,990	3,529,033
Occupied Housing Units	2,916	104,271	372,472	3,176,069
Vacant Housing Units	212	5,525	25,518	352,964
Owner Occupied Housing Units	2,284	83,525	266,593	2,126,279
Renter Occupied Housing Units	632	20,746	105,879	1,049,790

### Part 3: Hazard Identification and Risk Assessment

	Clayton Borough	Gloucester County	Region	New Jersey
Building Permits	21	716	1,554	13,535
Largest Industry	Educational Services, and health care and social assistance	Educational Services, and health care and social assistance	Educational services, and health care and social assistance	Educational services, and health care and social assistance

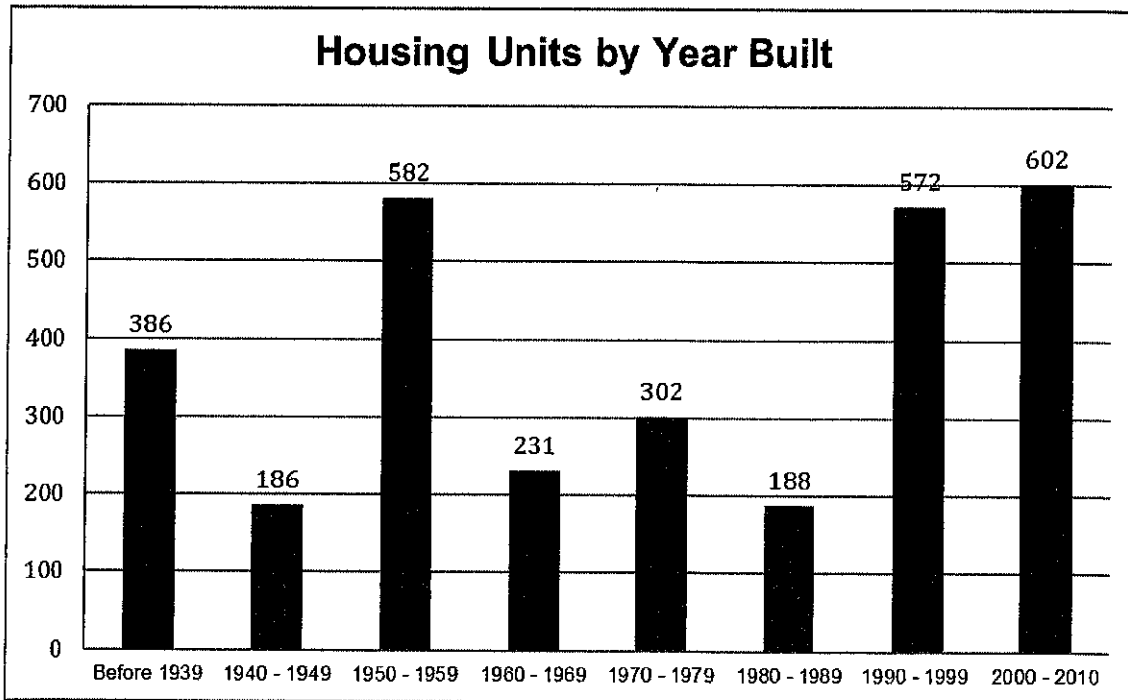
Table GC.2-6 illustrates how Clayton Borough ranks in the county and the four county region.

**Table GC.2-6: Clayton Borough Ranking (Economics and Housing)**

	Gloucester County (total of 24)	Region (total of 90)
Median Household Income Rank	11	27
Vacant Housing Rank	11	32
Renter Occupied Housing Rank	9	36
Building Permits	8	19

Figure GC.2-3 illustrates development patterns in Clayton Borough by examining housing units by year built. Nearly 19% of homes in Clayton Borough were built during the 1950s.

**Figure GC.2-3: Clayton Borough Housing Units by Year Built**  
(Source: 2010 ACS 5-Year Estimates, DP 4)



## **Part 3: Hazard Identification and Risk Assessment**

---

### **Part 3.2: Hazard Priorities**

*Part 3.2 includes hazard priority determinations per the Municipal Working Group.*

As a key step in the Hazard Identification and Risk Assessment (HIRA) process, the twelve (12) natural hazards identified in the NJ4 HMP<sup>1</sup> were discussed during the Municipal Working Group Work Sessions and the relative priority of these hazards was identified. The Municipal Working Group rated the hazards as follows:

#### **High Priority**

- Flood

#### **Moderate Priority**

- Dam Failure
- Drought
- Extreme Temperature: Cold & Hot
- High Wind
- Severe Weather – Summer
- Severe Weather – Winter
- Wildfire

#### **Low Priority**

- Earthquake

Three additional hazards were discussed but were not considered applicable to the municipality:

- Coastal Erosion & Sea Level Rise
- Geologic Hazards
- Levee Failure

---

<sup>1</sup> See Section 3: Hazard Identification and Risk Assessment.

## Part 3: Hazard Identification and Risk Assessment

### Part 3.3: Hazard Mapping

Part 3.3 includes cross references to hazard inventory and risk assessment mapping included in the NJ4 HMP Regional Hazard Mitigation Plan.

Table GC.2-7 provides information regarding hazard inventory mapping included in *Annex D: Hazard Profiles and Risk Assessments* of the NJ4 HMP that support the Hazard Identification and Risk Assessment (HIRA) for the Municipal Appendix. The indicated maps and exhibits correspond to the hazards identified by the Municipal Working Group in Part 3.2. The information represented by these maps will be used in the Critical Facilities Hazard Exposure Assessment described in Part 3.4.

**Table GC.2-7: Supporting Mapping and Exhibits**

Figure #	Hazard	Map	HIRA Contribution
Figure RP.D-11	Dam Failure	Dam Locations and Hazard Classification	Identify areas in proximity to rated dams
Figure RP.D-46	Flood	FEMA Flood Hazard Zones Preliminary FIRM (PFIRM)	Identify areas subject to periodic flooding (work-in-progress for revisions to effective FIRM)
Figure RP.D-99	Wildfire	Wildland Fuel Hazard Risk	Identify areas subject to wildfire
Figure RP.D-106	Wildfire	Wildland Urban Interface (WUI)	Identify areas subject to wildfire

The following hazards are not referenced as these hazards occur uniformly across the municipality and have the same potential impact on all properties and assets:

- Drought
- Earthquake
- Extreme Temperatures – Cold and Hot
- High Wind
- Severe Weather – Summer
- Severe Weather – Winter

## **Part 3: Hazard Identification and Risk Assessment**

---

### **Part 3.4: Critical Facilities Inventory and Hazard Exposure Assessment**

*Part 3.4 includes:*

- *Inventory information for municipal critical facilities*
- *Hazard exposure analysis results for municipal critical facilities*

Consistent with the process described in Section 3 of the NJ4 HMP Regional Hazard Mitigation Plan, Table GC.2-8 contains updated inventory information for municipal critical facilities including cross-references to related mitigation measures identified in Part 4 of the Municipal Appendix.

*Note: Shaded cells will be completed as part of follow-up efforts to be conducted as part of Mitigation Measure M-2 (see Part 4 of the Municipal Appendix).*

Table GC.2-9 provides the means to record results of overlaying critical facility locations with hazard mapping identified in Part 3.3. The results will indicate critical facilities that are potentially exposed to specific hazards.

*Note: This information will be used in critical site and facility assessments to be conducted as part of Mitigation Measure M-2 (see Part 4 of the Municipal Appendix).*

Hazards that apply to all critical facilities in the NJ4 region and will automatically be included in the proposed critical site and facility assessment process include:

- Earthquake
- High Wind
- Severe Weather – Summer
- Severe Weather – Winter

Hazards that do not relate to the proposed critical site and facility assessment process include:

- Drought
- Extreme Temperatures – Cold and Hot

As a result, these six (6) hazards are not included in the critical facility exposure assessment in Section 3 of the NJ4 HMP Regional Hazard Mitigation Plan.



### Part 3: Hazard Identification and Risk Assessment

Table GC.2-8: Clayton Borough (Gloucester County) Critical Facilities Inventory

CF #	Name	Type	Sub-Type	Address	Co-located CF #	Shelter (Y/N)	Generator (Y/N)	Comments	Mitigation Measure #
CF-1	Borough Hall	Municipal	Administrative Offices		CF-2, CF-3, CF-19	N	Y		
CF-2	Emergency Operations Center	EOC	Co-located Facilities		CF-1, CF-3, CF-19	N	Y		
CF-3	Police Station	Law Enforcement Facilities	Stations		CF-1, CF-2, CF-19	N	Y	Includes a holding cell	
CF-4	Clayton Borough Fire Company	Fire Stations	Stations			Y	Y	Shelter of last resort	
CF-5	Public Work Facilities	Public Works	Combined Administrative Office, Maintenance / Work Area, Equipment / Material Storage, and Fueling Station		CF-20	N	N		M-5
CF-6	Water Treatment Plant	Utilities – Water	Treatment Plants		CF-7, CF-17	N/A	Y		
CF-7	Water Tower	Utilities – Water	Water Towers		CF-6, CF-17	N/A	Y		
CF-8	Water Tower	Utilities – Water	Water Towers			N/A	Y		
CF-9	Water Tower	Utilities – Water	Water Towers			N/A	Y		
CF-10	Treatment Plant	Utilities – Wastewater	Treatment Plants			N/A			
CF-11	Brown Lane Pump Station	Utilities – Wastewater	Pump Stations / Lift Stations			N/A			M-10
CF-12	East Avenue Pump Station	Utilities – Wastewater	Pump Stations / Lift Stations			N/A	Y		
CF-13	Cenco Boulevard Pump Station	Utilities – Wastewater	Pump Stations / Lift Stations			N/A			
CF-14	Center Street Pump Station	Utilities – Wastewater	Pump Stations / Lift Stations			N/A			
CF-15	Lawns Pump Station	Utilities – Wastewater	Pump Stations / Lift Stations			N/A			
CF-16	Boro Avenue	Utilities – Wastewater	Pump Stations / Lift Stations			N/A			
CF-17	Chestnut Street Pump Station	Utilities – Wastewater	Pump Stations / Lift Stations		CF-6, CF-7	N/A			
CF-18	Booster Station Pump Station	Utilities – Wastewater	Pump Stations / Lift Stations			N/A			

### Part 3: Hazard Identification and Risk Assessment

CF #	Name	Type	Sub-Type	Address	Co-located CF #	Shelter (Y/N)	Generator (Y/N)	Comments	Mitigation Measure #
CF-19	Borough Hall Pump Station	Utilities – Wastewater	Pump Stations / Lift Stations		CF-1, CF- 2, CF-3	N/A			
CF-20	Public Works Pump Station	Utilities – Wastewater	Pump Stations / Lift Stations		CF-5	N/A			
CF-21	Recreation Center Pump Station	Utilities – Wastewater	Pump Stations / Lift Stations			N/A			
CF-22	Pump Station	Utilities – Wastewater	Pump Stations / Lift Stations			N/A	Y		
CF-23	Pump Station	Utilities – Wastewater	Pump Stations / Lift Stations			N/A	Y		
CF-24	Herma S. Simmons Elementary School	Schools	Public Schools			Y	Y		
CF-25	Clayton High School & Clayton Middles School	Schools	Public Schools			Y	Y		
CF-26	St Michael Archangel Regional School	Schools	Private Schools			N	Y		
CF-27	Senior Center	Vulnerable Populations Facilities	Senior Center			Y	N	Still under construction.	M-6
CF-28	Recreation Center	Other Municipal	Recreation Center			Y	N		M-7

### Part 3: Hazard Identification and Risk Assessment

Table GC.2-9: Clayton Borough (Gloucester County) Critical Facilities Hazard Exposure

CF #	Name	Increased Inundation +1 Foot	Increased Inundation +2 Foot	Increased Inundation +3 Foot	Dam Failure	Flood - FIRM Zone V	Flood - FIRM Zone A	Flood - FIRM Zone 0.2%	Storm Surge - Category 1	Storm Surge - Category 2	Storm Surge - Category 3	Storm Surge - Category 4	Levee Failure	Wildfire Wildland High Density Urban Interface	Wildfire Extreme / High Fuel Level Risk
CF-1	Borough Hall	N/A	N/A	N/A		N/A			N/A	N/A	N/A	N/A	N/A		
CF-2	Emergency Operations Center	N/A	N/A	N/A		N/A			N/A	N/A	N/A	N/A	N/A		
CF-3	Police Station	N/A	N/A	N/A		N/A			N/A	N/A	N/A	N/A	N/A		
CF-4	Clayton Borough Fire Company	N/A	N/A	N/A		N/A			N/A	N/A	N/A	N/A	N/A		
CF-5	Public Work Facilities	N/A	N/A	N/A		N/A			N/A	N/A	N/A	N/A	N/A		
CF-6	Water Treatment Plant	N/A	N/A	N/A		N/A			N/A	N/A	N/A	N/A	N/A		
CF-7	Water Tower	N/A	N/A	N/A		N/A			N/A	N/A	N/A	N/A	N/A		
CF-8	Water Tower	N/A	N/A	N/A		N/A			N/A	N/A	N/A	N/A	N/A		
CF-9	Water Tower	N/A	N/A	N/A		N/A			N/A	N/A	N/A	N/A	N/A		
CF-10	Treatment Plant	N/A	N/A	N/A		N/A			N/A	N/A	N/A	N/A	N/A		
CF-11	Brown Lane Pump Station	N/A	N/A	N/A		N/A			N/A	N/A	N/A	N/A	N/A		
CF-12	East Avenue Pump Station	N/A	N/A	N/A		N/A			N/A	N/A	N/A	N/A	N/A		
CF-13	Cenco Boulevard Pump Station	N/A	N/A	N/A		N/A			N/A	N/A	N/A	N/A	N/A		
CF-14	Center Street Pump Station	N/A	N/A	N/A		N/A			N/A	N/A	N/A	N/A	N/A		
CF-15	Lawns Pump Station	N/A	N/A	N/A		N/A			N/A	N/A	N/A	N/A	N/A		
CF-16	Boro Avenue	N/A	N/A	N/A		N/A			N/A	N/A	N/A	N/A	N/A		
CF-17	Chestnut Street Pump Station	N/A	N/A	N/A		N/A			N/A	N/A	N/A	N/A	N/A		
CF-18	Booster Station Pump Station	N/A	N/A	N/A		N/A			N/A	N/A	N/A	N/A	N/A		
CF-19	Borough Hall Pump Station	N/A	N/A	N/A		N/A			N/A	N/A	N/A	N/A	N/A		
CF-20	Public Works Pump Station	N/A	N/A	N/A		N/A			N/A	N/A	N/A	N/A	N/A		
CF-21	Recreation Center Pump Station	N/A	N/A	N/A		N/A			N/A	N/A	N/A	N/A	N/A		

### Part 3: Hazard Identification and Risk Assessment

CF #	Name	Increased Inundation +1 Foot	Increased Inundation +2 Foot	Increased Inundation +3 Foot	Dam Failure	Flood - FIRM Zone V	Flood - FIRM Zone A	Flood - FIRM Zone 0.2%	Storm Surge - Category 1	Storm Surge - Category 2	Storm Surge - Category 3	Storm Surge - Category 4	Levee Failure	Wildfire Wildland High Density Urban Interface	Wildfire Extreme / High Fuel Level Risk
CF-22	Pump Station	N/A	N/A	N/A		N/A			N/A	N/A	N/A	N/A	N/A		
CF-23	Pump Station	N/A	N/A	N/A		N/A			N/A	N/A	N/A	N/A	N/A		
CF-24	Herma S. Simmons Elementary School	N/A	N/A	N/A		N/A			N/A	N/A	N/A	N/A	N/A		
CF-25	Clayton High School & Clayton Middles School	N/A	N/A	N/A		N/A			N/A	N/A	N/A	N/A	N/A		
CF-26	St Catherine Of Siena School	N/A	N/A	N/A		N/A			N/A	N/A	N/A	N/A	N/A		
CF-27	Senior Center	N/A	N/A	N/A		N/A			N/A	N/A	N/A	N/A	N/A		
CF-28	Recreation Center	N/A	N/A	N/A		N/A			N/A	N/A	N/A	N/A	N/A		

---

## Part 4: Mitigation Measures

---

### Part 4.1: Mitigation Goals and Strategy

*Part 4.1 includes:*

- *Goal statements reviewed and approved by the Municipal Working Group based on goals included in the Southern Delaware Valley Region (New Jersey) Multi-Jurisdictional Hazard Mitigation Plans (SDVR HMPs) approved by FEMA in 2010 and 2011 for Camden, Cumberland, Gloucester, and Salem Counties*
- *Overarching strategy for the municipality's mitigation program*

Goals were originally established by the Southern Delaware Valley Region Hazard Mitigation Steering Committee and validated by the four County Hazard Mitigation Working Groups in response to risk and capability assessment results.

As part of the plan update process, these goals were reviewed and edited by the Municipal Working Group for use in the Municipal Appendix. All mitigation measures in the Municipal Appendix are related to at least one of these four goal statements.

- **Goal 1: Improve education and outreach efforts** regarding potential risk of natural hazards and appropriate mitigation measures that can be used to reduce risk (including programs, activities, and projects)
- **Goal 2: Improve data collection, use, and sharing** to reduce the risk of natural hazards
- **Goal 3: Improve capabilities and coordination** at municipal, county, and state levels to plan and implement hazard mitigation measures
- **Goal 4: Plan and implement projects** to mitigate identified natural hazards, known problems, and areas of concern

Based on these goals, the results of the NJ4 HMP Regional Hazard Mitigation Plan HIRA, and experience of participants in the plan update process, the Municipal Working Group identified an overarching strategy for mitigation:

- Focus on projects to address known problems or areas of concern for critical facilities and vulnerable populations as initial risk reduction effort
- Identify additional areas of concern for critical facilities and vulnerable populations for future plan updates
- Provide opportunities for residents and property owners to access available information about risk reduction and mitigation measures, to include private dam monitoring and maintenance measures
- Institutionalize hazard mitigation into municipal activities and programs through regular interactions of the Municipal Working Group and better integration of related regulatory programs and planning initiatives
- Stay informed regarding changing conditions and related improvements in hazard and risk data due to future natural hazard events and increasing understanding of the effects of climate change and use the information as part of periodic evaluations of and refinements or additions to the municipality's mitigation program

The mitigation measures described in Parts 4.3 through 4.5 of the Municipal Appendix reflect this strategy.

## Part 4: Mitigation Measures

### Part 4.2: SDVR HMP Mitigation Measures

*Part 4.2 includes the status of mitigation measures identified for the municipality in the SDVR HMP*

Known problems and areas of concern were the basis for mitigation measures identified in the SDVR HMP. In cases where these problems and concerns still existed at the time of the plan update, the related SDVR HMP mitigation measures were candidates for inclusion in the Municipal Appendix.

Table GC.2-10 identifies the status of mitigation measures included in the SDVR HMP. These entries were based on information provided by the Municipal Working Group. In some cases, the SDVR HMP mitigation measures were carried over as part of the Municipal Appendix as indicated in the "Comments" column and the far right-hand column of Table GC.2-10.

**Table GC.2-10: Status of Clayton Borough (Gloucester County) SDVR HMP Mitigation Measures**

Mitigation Action, Program, or Project	Status	Comments	Mitigation Measure # (Notes A & B)
<b>Clayton 1:</b> Structural retrofit of homes located between North Street and Main Street.	Not completed, not funded.	Issue is not considered valid. Therefore, mitigation measure is not included in updated Municipal Appendix.	N/A
<b>Clayton 2:</b> Engineering study to assess risk from Silver Lake Dam located on West Clayton Avenue.	Completed.	Issue was resolved through private funding mechanism. Therefore, mitigation measure is not included in updated Municipal Appendix.	N/A
<b>Clayton 3:</b> Engineering study to determine appropriate flood mitigation action and envelope/ improved path structural retrofits of data storage (Clayton Community Recreation Center) on Washington Avenue.	Completed.	Issue was resolved by moving records to upper floor in Clayton Borough Recreation Center. Therefore, mitigation measure is not included in updated Municipal Appendix.	N/A
<b>Clayton 4:</b> Engineering study to determine appropriate flood mitigation action and envelope/ improved path/ structural retrofits and secure roof ballast of Emergency Operation Center (EOC) and Police (Municipal Building) on Route 47.	Not completed, not funded.	Issue is not considered valid. Therefore, mitigation measure is not included in updated Municipal Appendix.	N/A
<b>Clayton 5:</b> Structural retrofit of Rustic Village Apartments - located on Route 47, (Buildings units A-K).	Not completed, not funded.	Issue is not considered valid. Therefore, mitigation measure is not included in updated Municipal Appendix.	N/A
<b>Clayton 6:</b> Secure roof ballast of shelter (Herma Simmons Elementary School) located on 300 West Chestnut Avenue.	Completed.	School Board procured a bond to complete this work. Therefore, mitigation measure is not included in updated Municipal Appendix.	N/A
<b>Clayton 7:</b> Critical facilities protection/ hazard threat recognition of hazmat (Propane Tank Farm) located on Delphi Drive Route 47.	Not completed, not funded.	Revised mitigation measure included in updated NJ4 HMP and Municipal Appendix. <sup>1</sup>	M-16

<sup>1</sup> Although natural hazards are the focus of the NJ4 HMP, these technological hazards are a continuing concern to the community and are documented in the Municipal Appendix to reflect the full range of hazards within Clayton Borough.

## Part 4: Mitigation Measures

Mitigation Action, Program, or Project	Status	Comments	Mitigation Measure # (Notes A & B)
<b>Clayton 8:</b> Critical facilities protection/ hazard threat recognition of hazmat (Aleris Light Aluminum Company).	Not completed, not funded.	Revised mitigation measure included in updated NJ4 HMP and Municipal Appendix. <sup>1</sup>	M-17

### Table GC.2-10 Notes:

- A. See Tables GC.2-11 and GC.2-12 for municipal (M-#) mitigation measures
- B. See Table GC.2-13 for multi-jurisdictional (MJ-#) mitigation measures

### Part 4.3: Municipal Mitigation Measures – Identification

*Part 4.3 includes brief descriptions of mitigation measures that are considered the sole responsibility of the municipality*

Table GC.2-11 includes the list of mitigation measures that are considered the responsibility of the municipality. These mitigation measures:

- Reflect the goals and strategy identified in Part 4.1
- Include projects carried over from SDVR HMPs as detailed in Part 4.2
- Include new projects, programs or activities identified by the Municipal Working Groups including measures to address known problems or areas of concern for critical facilities and vulnerable populations
- Address Repetitive Flood Loss (RL) and Severe Repetitive Flood Loss Properties (SRL)<sup>2</sup> if applicable

*Note: Clayton Borough does not currently have RL or SRL properties per information provided by the New Jersey Department of Environmental Protection.*

Table GC.2-11 includes:

- Brief description of the mitigation action, program or project
- Hazard(s) addressed by the measure
- Relevant goal(s) addressed by the measure
- Whether the measure pertains to existing or new structures or both

*Note: Mitigation measures with discrete locations are shown in Figure GC.2-4.*

<sup>2</sup> See Section 3: Hazard Identification and Risk Assessment and related portions of Annex D of the NJ4 HMP Regional Hazard Mitigation Plan for a description of RL and SRL properties.

## Part 4: Mitigation Measures

**Table GC.2-11: Clayton Borough (Gloucester County) Municipal Mitigation Measures Identification**

#	Mitigation Action, Program, or Project	Hazard(s)	Goal (s)	Existing or New Structures
M-1	Identify and pursue outreach and education opportunities to inform municipal residents, businesses, and property owners regarding: <ul style="list-style-type: none"> <li>• Current hazards and risks</li> <li>• Changing conditions and actions that may reduce / increase risk to include monitoring and maintenance of privately owned dams</li> <li>• Best practices for hazard mitigation at the individual or property level.</li> </ul>	All	Goal #1	Both
M-2	Prioritize critical facilities and complete site and facility surveys to identify vulnerabilities and potential mitigation measures.	All	Goal #2	Existing
M-3	Prioritize recurrent drainage problem areas and initiate data collection to track unreimbursed damages and related response and recovery expenses.	All	Goal #3	Both
M-4	Conduct regular Municipal Working Group meetings consistent with the plan maintenance program and the Municipal Adoption Resolution.	All	Goal #4	Both
M-5	Install permanent backup emergency power generator at Public Works Building (CF-5).	All	Goal #4	Existing
M-6	Install permanent backup emergency power generator at Senior Center (CF-27).	All	Goal #4	Both
M-7	Install permanent backup emergency power generator at Recreation Center (CF-28).	All	Goal #4	Both
M-8	Clean storm drains behind Brown Lane.	Flood	Goal #4	Existing
M-9	Upgrade drainage system at North Street.	Flood	Goal #4	Existing
M-10	Upgrade drainage system at Pump Station located at Brown Lane (CF-11).	Flood	Goal #4	Existing
M-11	Dredge Still Run stream behind Bernard Street. <sup>3</sup>	Flood	Goal #4	Existing
M-12	Dredge area of Little Ease Run Creek behind North Dennis Drive. <sup>3</sup>	Flood	Goal #4	Existing
M-13	Engineering study to determine sewer flooding and infiltration at Bernard Street & Washington Avenue.	Flood	Goal #4	Existing
M-14	Engineering study to identify upgrades to storm water management system at Lawns Area.	Flood	Goal #4	Existing
M-15	Engineering study to determine drainage / water storage solution at Still Run.	Flood	Goal #4	Existing
M-16	Hazard threat assessment related to Propane Tank Farm located on Delphi Drive Route 47. <sup>4,5</sup>	Risk / Threat Assessment	Goal #4	Existing
M-17	Hazard threat assessment related to Aleris Light Aluminum Company. <sup>4,6</sup>	Risk / Threat Assessment	Goal #4	Existing

<sup>3</sup> Dredging can only be a consideration for mitigation if Clayton Borough receives permits from NJDEP.

<sup>4</sup> Although natural hazards are the focus of the NJ4 HMP, these technological hazards are a continuing concern to the community and are documented in the Municipal Appendix to reflect the full range of hazards within Clayton Borough.

<sup>5</sup> Work with Propane Tank Farm to complete mitigation measure.

<sup>6</sup> Work with Aleris Light Aluminum Company to complete mitigation measure.



## Part 4: Mitigation Measures

### Part 4.4: Municipal Mitigation Measures – Implementation

*Part 4.4 includes a tabulation of relevant aspects related to the implementation of the municipal mitigation measures*

Table GC.2-12 includes information identified by the Municipal Working Group:

- Part(ies) responsible for following up with implementation of the measure
- Priority for implementation considering a range of criteria<sup>7</sup>
- Project Type to help determine funding options and implementation mechanisms at the municipal level<sup>8</sup>
- Estimated Cost, including estimates provided by the Municipal Working Group or approximate ranges for projects that are in early stages of development
- Target Date, indicating desired completion dates assuming availability of funding
- Next step(s) anticipated to implement the identified mitigation measures at the municipal level

**Table GC.2-12: Clayton Borough (Gloucester County) Municipal Mitigation Measures Implementation**

#	Mitigation Action, Program, or Project	Responsible Part(ies)	Priority	Project Type	Estimated Cost (\$)	Target Date	Next Step(s)
M-1	Identify and pursue outreach and education opportunities.	Municipal OEM	Moderate	Public Outreach and Education	Staff time commitment	On-going	<ul style="list-style-type: none"> <li>▪ Work with County Working Group to identify resource needs and availability.</li> <li>▪ Identify target audience(s).</li> </ul>
M-2	Prioritize critical facilities and complete site and facility surveys to identify vulnerabilities and potential mitigation measures.	Municipal OEM and Facility Managers	High	Data Acquisition and Management	Staff time commitment	On-going	Review critical facility list and establish priorities, procedures, and tentative time schedule for conducting site and facility surveys.
M-3	Prioritize recurrent drainage problem areas and initiate data collection to track unreimbursed damages and related response and recovery expenses.	Municipal OEM and Municipal Public Works	High	Data Acquisition and Management	Staff time commitment	On-going	Establish priorities, procedures, and reporting process for data collection.
M-4	Conduct regular Municipal Working Group meetings consistent with the plan maintenance program and the Municipal Adoption Resolution.	Municipal OEM and Municipal Working Group	Moderate	Capabilities and Coordination	Staff time commitment	On-going	Establish regular Municipal Working Group membership, reporting requirements, and meeting / work session schedule.

<sup>7</sup> See *Section 4: Mitigation Measures* and related portions of Annex E of the NJ4 HMP Regional Hazard Mitigation Plan for a description of evaluation criteria considered by the Municipal Working Group.

<sup>8</sup> See *Section 4: Mitigation Measures* and related portions of Annex F of the NJ4 HMP Regional Hazard Mitigation Plan for a description of project types and related information regarding funding options and implementation mechanisms.

## Part 4: Mitigation Measures

#	Mitigation Action, Program, or Project	Responsible Part(ies)	Priority	Project Type	Estimated Cost (\$)	Target Date	Next Step(s)
M-5	Install permanent backup emergency power generator at Public Works Building (CF-5).	Municipal OEM and Public Works Department	High	Back-up Emergency Power Generator	< \$100K	One to three years	Conduct project scoping.
M-6	Install permanent backup emergency power generator at Senior Center (CF-27).	Municipal OEM and Public Works Department	High	Back-up Emergency Power Generator	< \$100K	One to three years	Conduct project scoping.
M-7	Install permanent backup emergency power generator at Recreation Center (CF-28).	Municipal OEM and Public Works Department	High	Back-up Emergency Power Generator	< \$100K	One to three years	Conduct project scoping.
M-8	Clean storm drains behind Brown Lane.	Municipal OEM and Public Works Department	High	Private Property Flood Mitigation	\$100K – \$500K	One to three years	Conduct project scoping.
M-9	Upgrade drainage system at North Street.	Municipal OEM and Public Works Department	High	Private Property Flood Mitigation	\$100K – \$500K	One to three years	Conduct project scoping.
M-10	Upgrade drainage system at Pump Station located at Brown Lane (CF-11).	Municipal OEM and Public Works Department	High	Public Property Flood Mitigation	< \$100K	One to three years	Conduct project scoping.
M-11	Dredge Still Run stream behind Bernard Street.	Municipal OEM and Public Works Department	High	Private Property Flood Mitigation	< \$100K	One to three years	Conduct project scoping.
M-12	Dredge area of Little Ease Run Creek behind North Dennis Drive.	Municipal OEM and Public Works Department	Moderate	Private Property Flood Mitigation	\$100K – \$1M	Three to five years	Conduct project scoping.
M-13	Engineering study to determine sewer flooding and infiltration at Bernard Street & Washington Avenue.	Municipal OEM and Public Works Department	High	Public Property Flood Mitigation	< \$50K	One to three years	Develop scope of work for engineering study and procure professional consulting services.
M-14	Engineering study to identify upgrades to storm water management system at Lawns Area.	Municipal OEM and Public Works Department	High	Private Property Flood Mitigation	< \$50K	One to three years	Develop scope of work for engineering study and procure professional consulting services.
M-15	Engineering study to determine drainage / water storage solution at Still Run.	Municipal OEM, Public Works Department, Private Home Owners	High	Private Property Flood Mitigation	< \$50K	One to three years	Develop scope of work for engineering study and procure professional consulting services.
M-16	Hazard threat assessment related to Propane Tank Farm located on Delphi Drive Route 47.	Municipal OEM and Propane Tank Farm	Low	Risk / Threat Assessment	< \$50K	Three to five years	Develop scope of work for risk / threat assessment and procure professional consulting services.
M-17	Hazard threat assessment related to Aleris Light Aluminum Company.	Municipal OEM and Aleris Light Aluminum Company	Low	Risk / Threat Assessment	< \$50K	Three to five years	Develop scope of work for risk / threat assessment and procure professional consulting services.

## Part 4: Mitigation Measures

### Part 4.5: Multi-Jurisdictional Mitigation Measures

*Part 4.5 includes brief descriptions of mitigation measures that require multiple jurisdictions to implement*

During the Municipal Working Group Work Sessions, the Municipal Working Group identified some SDVR HMP mitigation measures as well as new areas of concern as mitigation measures where implementation requires participation or leadership from other levels of government, including county, state, and federal agencies. These multi-jurisdictional mitigation measures are included in Table GC.2-13.

*Section 4: Mitigation Measures* of the NJ4 HMP Regional Hazard Mitigation Plan describes multi-jurisdictional implementation strategies in detail. Section 4 identifies multi-jurisdictional mitigation measures that Municipal Working Groups believe are partly or wholly the responsibility of County agencies. These measures have been referred to the County Working Group for consideration. As part of the mitigation measures in the County Appendix to the NJ4 HMP Regional Hazard Mitigation Plan, the County Working Group will be working with the municipalities to identify:

- Specific responsibilities amongst different level(s) of government to address these problem areas
- Mitigation measures or related projects which may address the described problem areas that are already acknowledged as County responsibilities including identifying the appropriate County agency or department taking the lead role and status of implementing these mitigation measures
- Which, if any, additional mitigation measures the member agencies of the County Working Group will assume responsibility to implement

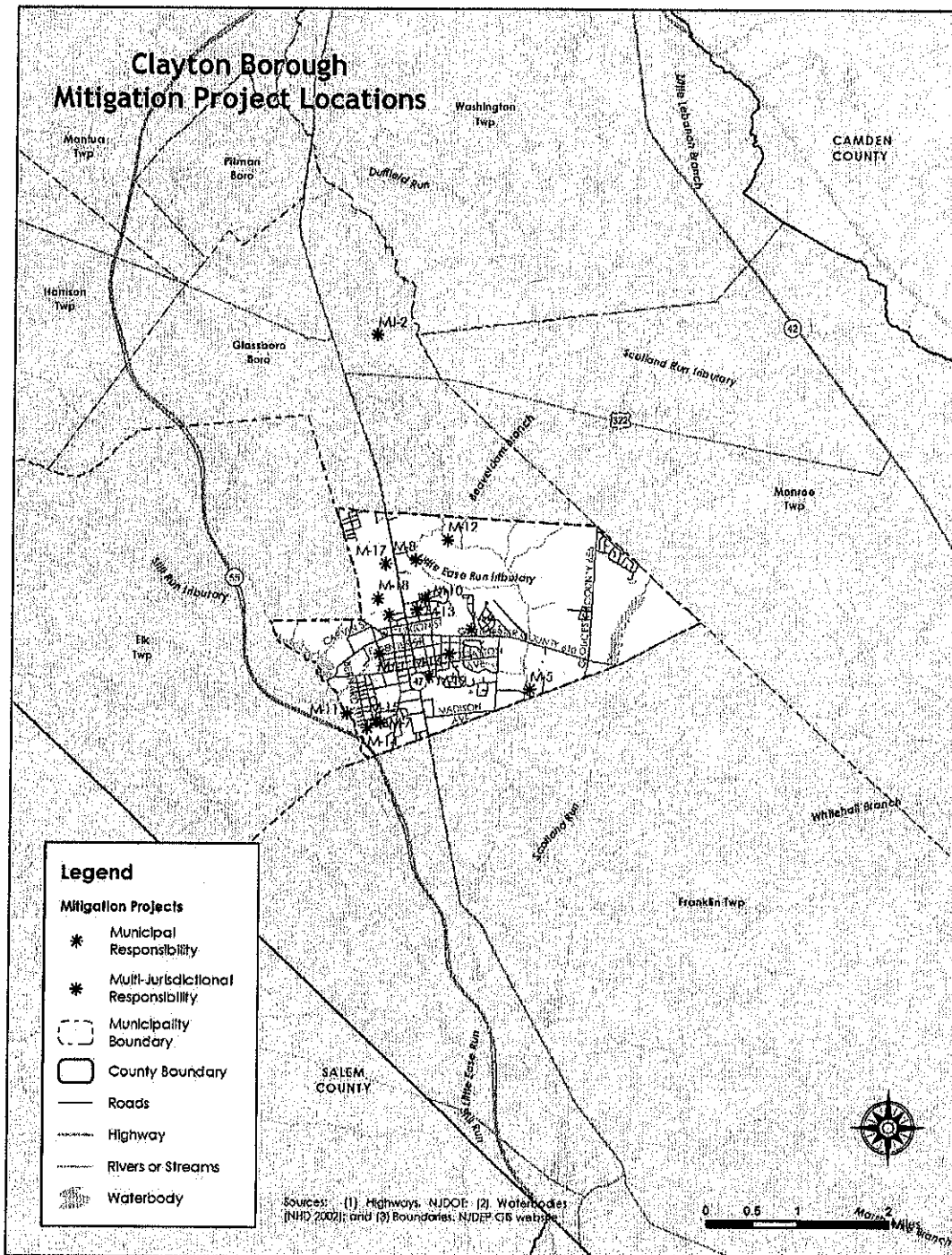
*Note: Multi-jurisdictional mitigation measures with discrete locations are shown in Figure GC.2-4.*

**Table GC.2-13: Clayton Borough (Gloucester County) Multi-Jurisdictional Mitigation Measures**

#	Problem Description	Hazard(s) Addressed	Goal Addressed	Applies to Existing or New Structures	Potential Partners	Priority
MJ-1	Improve storm drainage system on Atlantic Avenue.	Flood	Goal #4	Both	Municipal OEM, Gloucester County DPW	Moderate
MJ-2	Improve storm drainage on Lewis Drive.	Flood	Goal #4	Both	Municipal OEM, NJDEP	High

## Part 4: Mitigation Measures

Figure GC.2-4: Clayton Borough Mitigation Project Locations



---

## Part 4: Mitigation Measures

---

### Part 4.6: Authorities, Policies, Programs, Resources, and Plan Integration

Part 4.6 includes three (3) subparts:

- **Authorities, Policies, and Programs** - Cross referencing relevant information and recommendations in the NJ4 HMP Regional Hazard Mitigation Plan regarding existing authorities, policies, and programs in the region and specific information about the jurisdiction's participation and continued compliance in the National Flood Insurance Program (NFIP)
- **Capabilities and Coordination** - Cross referencing relevant information and recommendations in the NJ4 HMP Regional Hazard Mitigation Plan regarding improving capabilities and coordination at the municipal level and specific information about the jurisdiction's available resources
- **Plan Review and Integration** – Identifying plans and programs included in the development of Plan Integration recommendations in the NJ4 HMP Regional Hazard Mitigation Plan

### Authorities, Policies, and Programs

*Section 1.3: Existing Authorities, Policies, Programs, and Resources* of the NJ4 HMP Regional Hazard Mitigation Plan summarizes relevant authorities, policies, and programs related to hazard mitigation in the region including the NFIP.

Continuing municipal participation in the NFIP as part of the implementation of the NJ4 HMP by the municipality, includes:

- Involvement of Floodplain Manager / Administrator during the NJ4 HMP implementation process
- Commitment to adopt updated FIRMs and evaluate / update the municipality's Flood Management Plan and/or Ordinance as appropriate per recommendations in Section 4.6 of the NJ4 HMP Regional Hazard Mitigation Plan

### Capabilities and Coordination

The update of the SDVR HMP included reexamining municipal hazard mitigation capabilities; potential for improving capabilities and coordination within and between jurisdictions; and, plan integration considerations. *Section 1.3: Existing Authorities, Policies, Programs, and Resources* of the NJ4 HMP Regional Hazard Mitigation Plan includes summary statements regarding regional resources and the impact of resource limitations on the overall approach to the NJ4 HMP mitigation strategies. *Section 4: Mitigation Measures* and related portions of Annex F of the NJ4 HMP Regional Hazard Mitigation Plan include summary observations and recommendations concerning:

- Hazard mitigation planning and mitigation measure implementation capabilities and coordination at the regional, county, and municipal levels
- Coordination within municipal governments, between municipal governments and their communities, and between municipal, county, and state agencies responsible for hazard mitigation

### Plan Review and Integration

Specific documents obtained during the plan update process from the Municipal Working Group include:

- Emergency Operations Plan (2013)
- Floodplain Ordinance
- Master Plan and Reexamination Reports (2007)
- Capital Improvement Budget (2014)<sup>9</sup>
- Land Use and Development Ordinances<sup>10</sup>
- Stormwater Management Plan<sup>11</sup>

Table RP.4-4 in *Section 4.6: Plan Review and Integration* of the NJ4 HMP Regional Hazard Mitigation Plan identifies the primary plans and documents collected from each of the participating municipalities. In addition, Annex E.2 provides a complete list of all the plans and documents collected from the participating municipalities.

Section 4.6 also includes the results of reviewing the primary plans and documents to determine the extent to which these documents reflect up-to-date hazard risk and mitigation. In addition, Section 4.6 includes recommendations for integrating the results of the NJ4 HMP, including hazard mitigation data, goals, measures, and/or recommendations with existing plans and programs at the municipal level that are relevant to all participating municipalities and incorporated by reference in each of the jurisdiction-specific Appendices including:

- Hazard Assessments
- Emergency Operations Plans
- Floodplain Management Ordinances
- Master Plans and Reexamination Reports
- Other plans and documents

The plan maintenance process includes a commitment to review and follow these recommendations during future scheduled updates of these various documents as considered appropriate by the Working Group and the governing body of the municipality.

---

<sup>9</sup> <http://108.174.148.114/~clayton4/public/wp-content/uploads/2014/04/Clayton2014BudgetadoptedApril242014.pdf>

<sup>10</sup> <http://claytonnj.com/public/borough-ordinances/>

<sup>11</sup> [http://108.174.148.114/~clayton4/public/wp-content/uploads/Boro\\_Ordinances/Storm\\_Sewer\\_System.pdf](http://108.174.148.114/~clayton4/public/wp-content/uploads/Boro_Ordinances/Storm_Sewer_System.pdf)

## Attachment A: Public Review Comments

---

The following comments were received during the public review of the Clayton Borough Municipal Appendix:

**Table GC.2.A-1: Public Review Comments**

Comment Date and Time	Comment	Response

*Note: As of April 17, 2015, no public review comments were received for the Clayton Borough Municipal Appendix.*

## **Attachment B: Adoption Resolution**

---

Following this page is the Adoption Resolution for the Clayton Borough Municipal Appendix as approved by the Clayton Borough Council.



### **Attachment C: Approval Letter**

---

Following this page is the Approval Letter for the Clayton Borough Municipal Appendix.